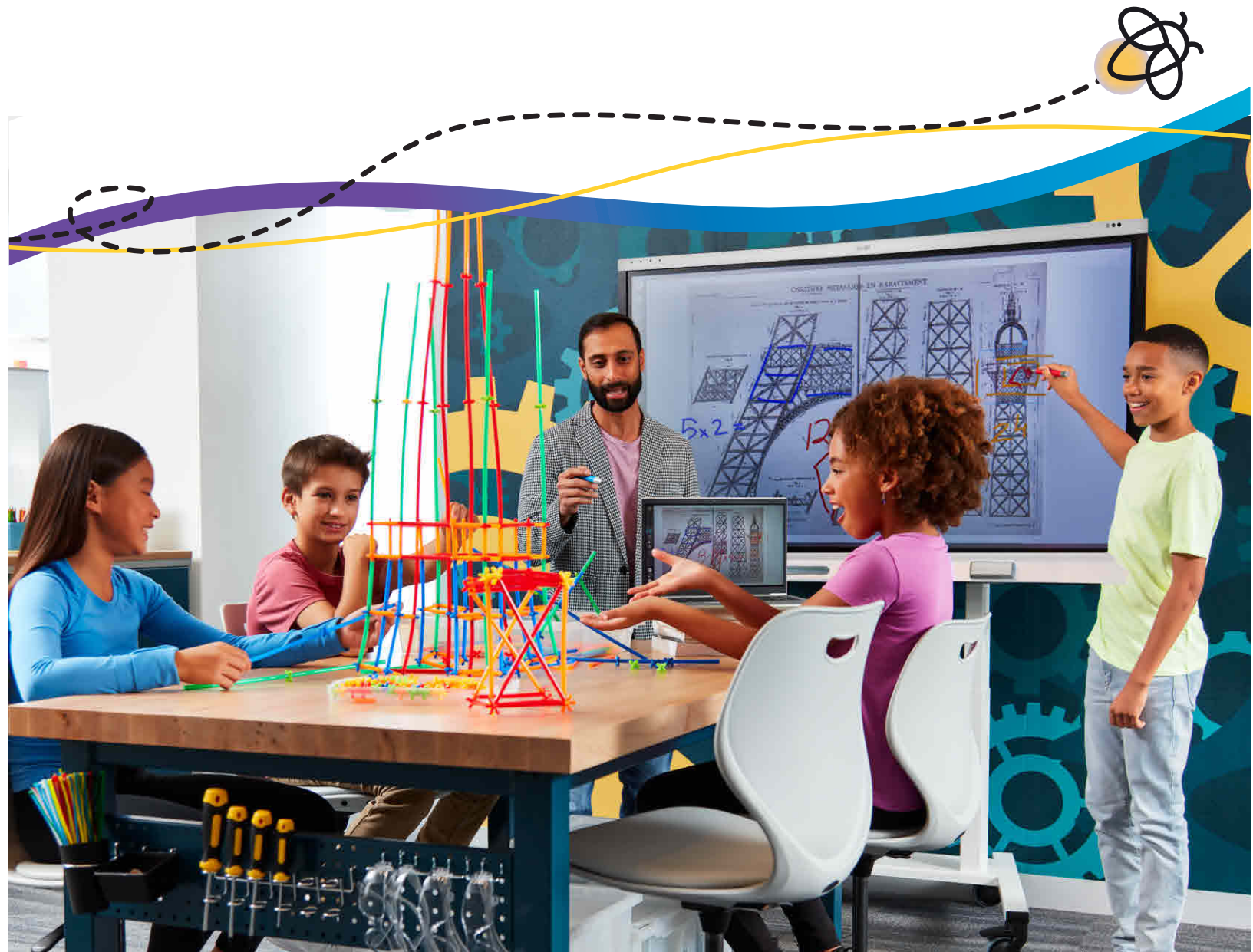


SMART EDUCATION SOLUTIONS



Technology for today's classrooms



Connections that matter

At SMART, we're on a mission to create and advance the technology that helps teachers and learners make authentic, meaningful connections.

The connections that really matter—and inspire greatness.

Explore [Connections That Matter](#): an inspiring collection of stories and resources ensuring connections continue to thrive around the world.

SMART is the solution

for connected classrooms with simple, faster adoption, less maintenance, and flexible long-term technology.

SMART solutions are designed for **active learning**. With software and hardware that unites students across any distance and empowers **truly engaged learning**.

When you choose SMART for your classrooms you get technology that works—on its own and with **seamless integrations** into existing platforms and workflows like Microsoft and Google.

So teachers can spend **more time teaching** and less time figuring out new complicated tools, signing into endless platforms and breaking lesson flow.

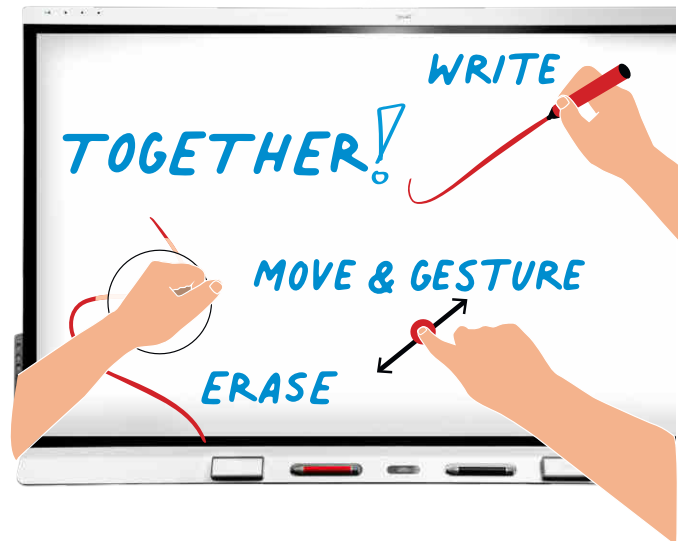




ONLY SMART enables multiple users to intuitively write, erase, touch, and gesture at the same time, across platforms and applications, without interfering with another's tool choice.

That's ALL interactions—not just “pen and touch” like the other guys.

The world's **ONLY** interactive technology for true student collaboration



The world leader in interactive technology SMART interactive displays

Compare industry-leading interactivity



6000S series

MX series

GX series

Continuous touch points	Up to 40	20	20
Interaction types	Pens, touch, gesture, erase, highlighter* & Tool Explorer™ tools*	Pens, touch, gesture, erase	Pens, touch, gesture, erase
Continuous differentiation of all interaction types	✓	✓	✓†
Object recognition	✓	✓	✓†
Palm rejection	Yes - writing and non-writing hand	No	No
PenID for automatic, differentiated color	✓	No	No
Tools included	2 pens (black, red) with fine erase, 2 eraser blocks	2 pens	2 pens
Additional pen colors available	★ 4 color pens + magnetic holder ★ 2-color Highlighter ★ Magic Pen	n/a	n/a

* Additional tools for patented Tool Explorer technology sold separately.

† When connected to a PC or Mac computer with SMART drivers installed



IN A LEAGUE OF ITS OWN

6000S series (V3)

iQ embedded computing

- Powered by Android™ 11
- OPS upgradable
- Automatic OTA updates & upgrades

iQ whiteboard

- Live broadcast to connected devices with multi-way inking
- Presenter and participant-paced navigation modes
- Native and app-based screensharing

4k display features:

- 2 x 20W speakers
- Integrated mic array
- NFC Reader
- Sensors: ambient light, proximity, temperature, humidity
- 2x USB C 3.2 65W (front) 65W (rear)

Included:

- SMART Notebook®
- SMART Ink™
- SMART Remote Management†
- Remote control
- SMART Assure‡ warranty
- Wall mount



THE GAME CHANGER

MX series (V4)

iQ embedded computing

- Powered by Android 11
- OPS upgradable
- Automatic OTA updates & upgrades

iQ whiteboard

- Live broadcast to connected devices with multi-way inking
- Presenter and participant-paced navigation modes
- Native and app-based screensharing

4k display features:

- 2 x 20W speakers
- Integrated mic array
- NFC Reader
- Sensors: ambient light
- 2x USB C 3.2 15W (front) 65W (rear)

Included:

- SMART Notebook
- SMART Ink
- SMART Remote Management†
- Remote control
- SMART Assure‡ warranty



THE BETTER BASIC DISPLAY

GX series (V2)

Embedded Android computing

- Android 11
- OTA updates

Android-based whiteboard

- Native and app-based screensharing

Features:

- 2x 20W front-facing speakers
- Sensors: ambient light
- 2 x USB C

Included:

- SMART Notebook
- SMART Ink
- Remote control

Available add-ons:

- SMART Assure‡ warranty
- SMART Remote Management†

The effortless choice for IT professionals

SMART provides the coverage and tools you need – including exceptional ease of use, built-in security, and automatic OTA updates – to save time and provide unmatched value to IT Professionals.



Industry-leading warranty

- ✓ Advanced replacement
- ✓ Two-way shipping
- ✓ Onsite service*
- ✓ Live technical support from global, in-house teams



Easy administration

- ✓ Secure iQ user profiles & NFC setup through Google & Microsoft workflows.
- ✓ Control and secure displays from a central location with included‡ SMART Remote management.



Easy adoption

- ✓ Designed for out-of-the-box use—no setup or training required.
- ✓ Complimentary professional learning plans, online courses and webinars—both functional and pedagogical.

† Onsite service in SMART Assure available in North America, UK and Ireland, Austria, Germany, Switzerland, Belgium, the Netherlands, Luxembourg, Australia, New Zealand. Included in the UK for all GX purchases

‡ Subscription included with iQ enabled models for length of included product warranty term

IN A LEAGUE OF ITS OWN

Our one-of-a-kind powerhouse display delivers unmatched value when it comes to ease of use and student engagement.

Discover why it's the most effortless choice for IT professionals.

65" | 75" | 86"



The most advanced and intuitive **Touch and ink**

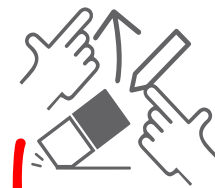


Make room for everyone with the easiest to use, most intuitive touch technology on the market. Multiple users can intuitively write, erase, touch and gesture at the same time, across platforms and applications, without interfering with another user's tool choices.

The SMART 6000S series supports more differentiated pens than any other interactive display, so each student can choose their own SMART Ink tool with their own pen—including shape recognition, highlighters, creative pens and stamps!



Up to **40** continuous touch points, plus:



Continuous pen touch and erase differentiation



Palm reject



Eraser blocks



Automatic color recognition



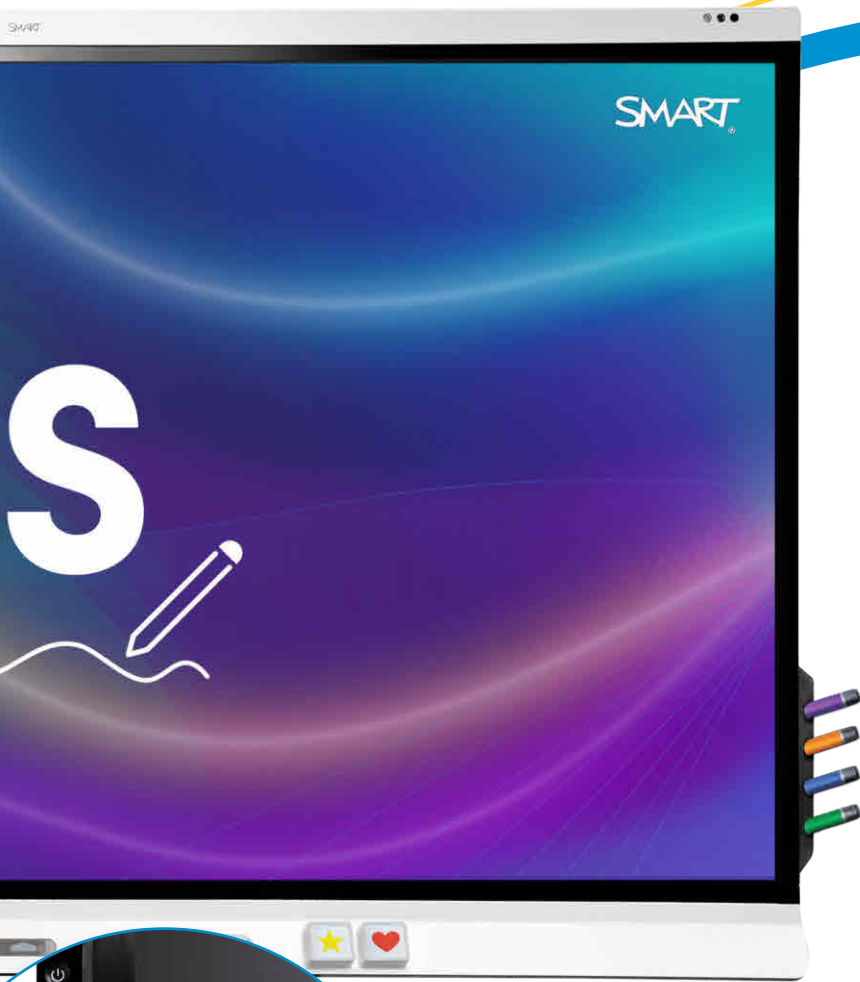
Up to 6 pens* with fine erase



Dual-ended highlighter and magic pen*

* Red and black pens included. Additional pens sold separately.





Built to last

Packed with future-facing technology specifications to support the greatest ease of use, longevity, and the widest variety of implementation needs.



Microphone Array



Integrates with new SMART UHD webcam



4K Ultra HD, LED 50,000 hrs



Android 11



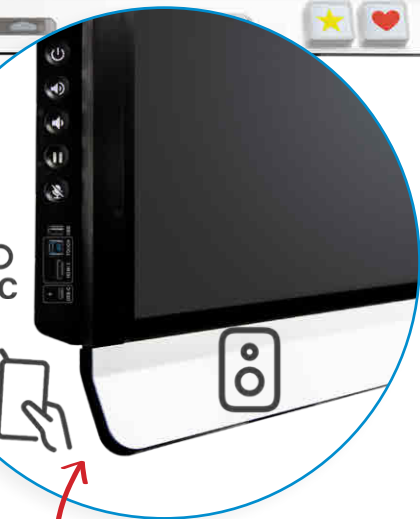
Sensors:

Ambient light

Proximity

Temperature

Humidity



Illuminated central home button

2x 65W USB-C

2x 20W Speakers

NFC Reader

Accessibility

features included

Every board includes easy-to-access, forward-facing ports and controls with large, intelligently illuminated buttons for ease of use in situations of low light or visual impairment.



The right choice

for Early and Special Education






With Tool Explorer, students can interact with physical objects, like cubes and stamps, that are automatically recognized by the display. This opportunity for engaging kinesthetic learning with real world objects makes the 6000s series the best choice for early and special education.

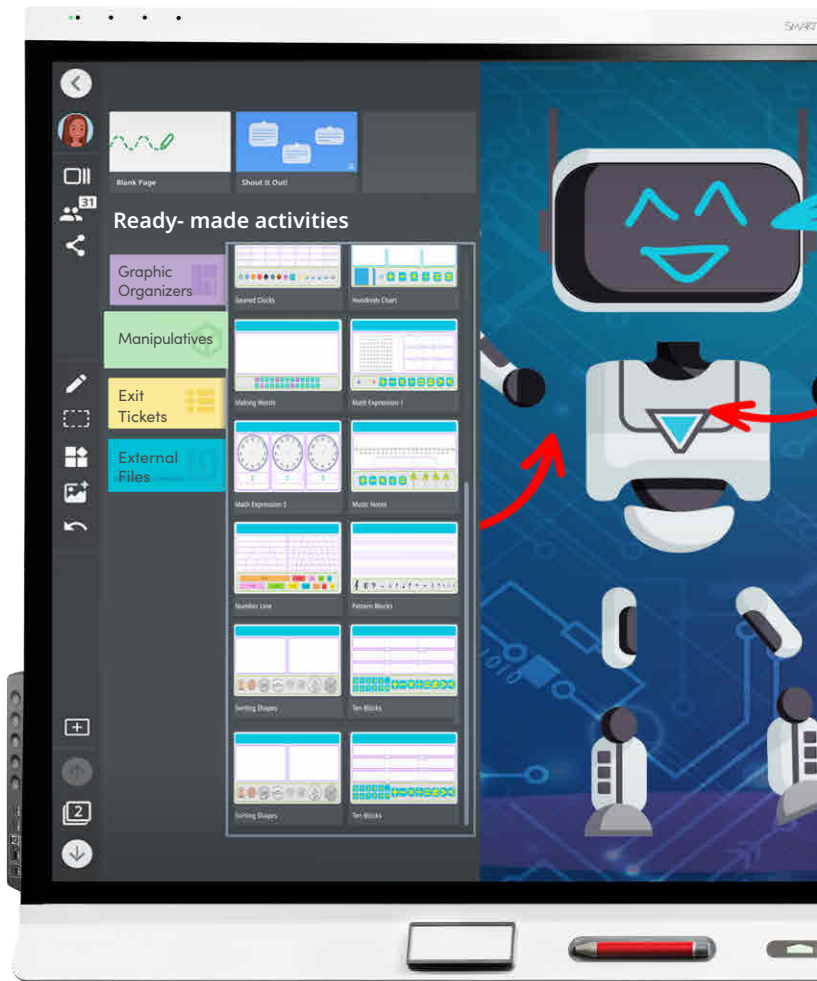


Powered by iQ means easy and engaging

iQ computing means easier workflows for educators, a whiteboard app and tools designed for education, and a curated app store—all kept secure with customizable user profiles. Everything teachers need to confidently teach is at their fingertips, regardless of their tech comfort level.

iQ at a glance

-  Built on Android 11
-  NFC sign-in
 - Up to 20 self-serve profiles
 - Powered by Google & Microsoft
 - Lock screen
-  Personalized quick-launch home screen
-  Cloud storage access
-  App store & featured web apps
 - Including G-Suite and Microsoft Office apps



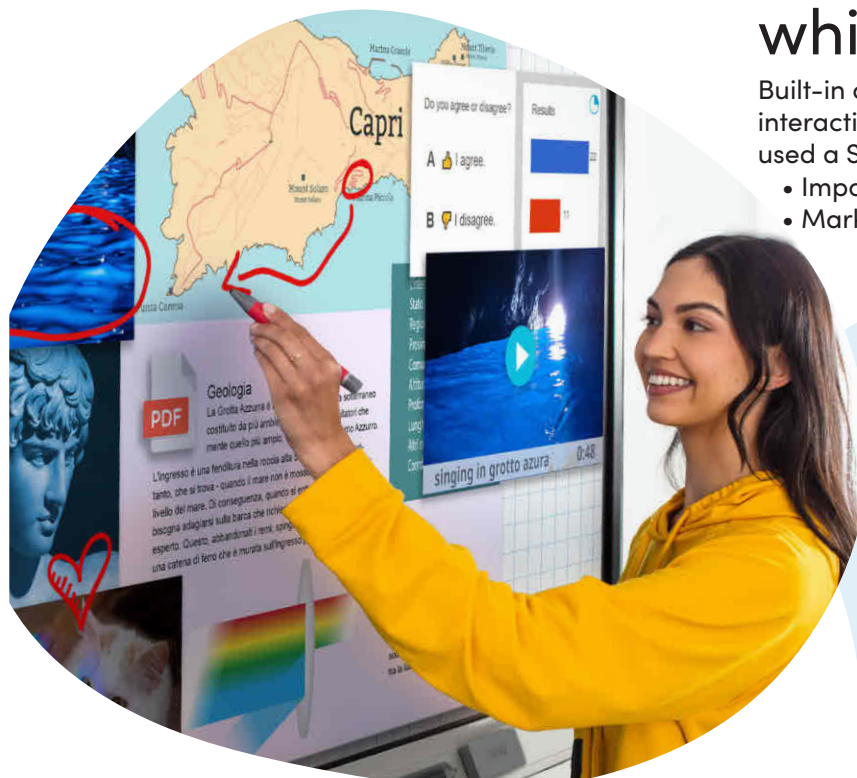
The “walk up and teach” whiteboard

Built-in content and activities make it easy for teachers to add interactivity and engagement on the fly—even if they’ve never used a SMARTBoard.

- Import multi-page PDFs **in as little as 3 clicks**
- Markup web browser or apps, import, and keep editing!

Built-in teaching tools for any subject:

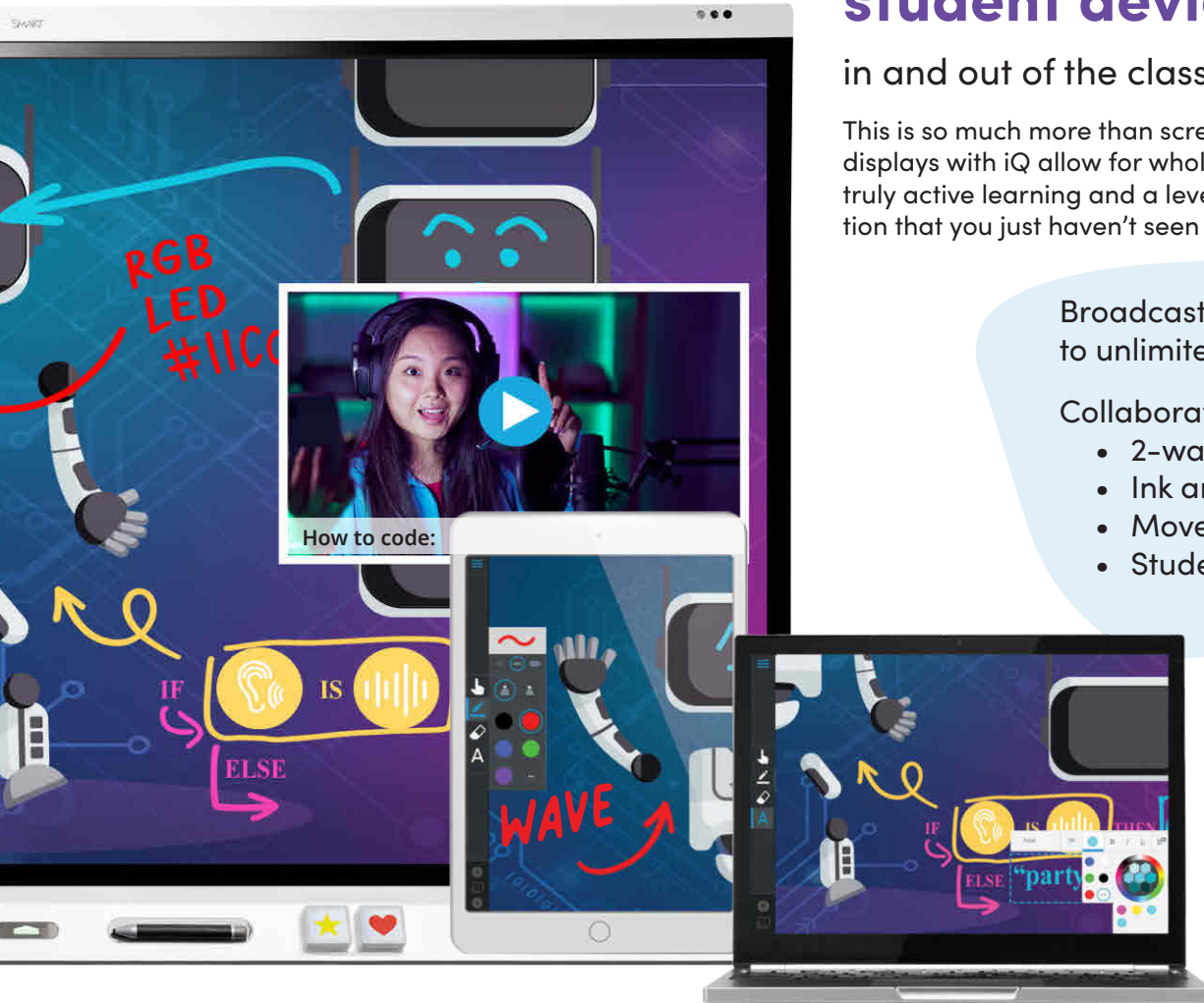
- Integrated video and image search
- Graphic organizers
- Digital manipulatives & interactive backgrounds
- Collaboration activities for student devices
- Freeform & categorized brainstorming
- Measurement tools
- Classroom tools like timers and spinners



Get more from your student devices—

in and out of the classroom

This is so much more than screen sharing. SMART displays with iQ allow for whole-class participation, truly active learning and a level of student collaboration that you just haven't seen before.



Broadcast live whiteboard to unlimited* devices

Collaborative student tools:

- 2-way annotation
- Ink and text tools
- Move and resize objects
- Student attribution

40+ Students connected to display*

10



Student connection options

Whiteboard

1. Live whiteboard broadcast
2. Collaboration access



ANY DEVICE, ANY NETWORK!

Screencast

3. Airplay
4. Google cast
5. Miracast
6. Screencast app
7. Web app



Wired

- Including plug & play Windows Ink support
8. HDMI + USB
 9. 65w USB-C

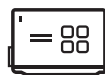


10. Share through your choice of video conferencing solution



5

Teacher control options



Whiteboard

1. Teacher-led navigation
2. Student-paced navigation
3. Pause collaborative mode



Screencast

4. Unmoderated
5. Moderated, with 4x grid view

*Unlimited connections available to whiteboard. Speed & functionality subject to individual network capabilities

THE GAME CHANGER

We've changed the game with the MX Series, a display that offers value and capability that our competitors just can't touch.

Discover why it's the a smart choice for IT professionals.

55" | 65" | 75" | 86"



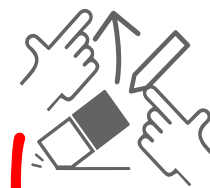
Experience true multi-user **Touch and ink**







Make room for everyone with the only touch technology on the market to let your students write, erase, touch and gesture at the same time, across platforms and applications, without interfering with another user's tool choices.

The SMART MX series intuitively recognizes what tool you're using, and is smart enough to maintain your pen choice across files and apps, making it effortless for teachers and students to transition between programs.

20 continuous touch points, plus:



Continuous pen touch and eraser differentiation

-  2 pens
-  Palm erase
-  Zero-bonded glass*
-  NEW in MX-V4:

Faster, more accurate inking
Wi-Fi 6
Bluetooth 5.2



Built to last

Packed with future-facing technology specifications to support the greatest ease of use, longevity, and the widest variety of implementation needs.



Microphone Array



Integrates with new SMART UHD webcam



4K Ultra HD, LED 50,000 hrs



Android 11



Ambient light sensors



Illuminated central home button

USB-C - 65W & 15W

2x 20W Speakers*

NFC Reader

Make meaning out of mistakes with **Unrestricted erasing**



The freedom to experiment and take chances is a key element of truly effective learning environments. The MX series' interactive technology frees up the eraser to be used at any time—even while other students are writing and interacting.

So, go ahead. Take a stab at that word problem or attempt to draw your idea in front of the class. With SMART, the only thing that's permanent is learning that's connected and engaging.

*20W speakers and sero-bonded glass not available in 55" model

THE BETTER BASIC DISPLAY!

65" | 75" | 86"

Experience the SMART difference

The GX series combines the creative power of SMART software with interactive technology innovations to provide SMART's unique multiuser experience – letting your students to intuitively write, erase, touch, and gesture at the same time without interfering with another's tools—on both Windows and Mac.



20 continuous touch points:



Write, touch, gesture, palm erase



Pen, touch AND eraser differentiation



ENERGY STAR certification and Ecodesign compliance



Backed by SMART warranty

Bring SMART goodness to your classroom at a great price, for more connected and engaging learning.

The SMART GX series interactive display provides all the technical features you're looking for to get started with interactivity, with the added value, security and reliability of an established partner in SMART Technologies.

Discover why it's the smart choice for IT professionals.



4K Ultra HD, LED 50,000 hrs



Android 11

Android-based digital whiteboard



Native and App-based screen sharing



Cloud storage access



Faster, louder, clearer:

- Zero-bonded glass
- Wi-Fi 6, BT 5.2
- 2x 20W speakers
- 15W USB-C



ENERGY STAR certification and Ecodesign compliance



Backed by SMART warranty

Learning software teachers love

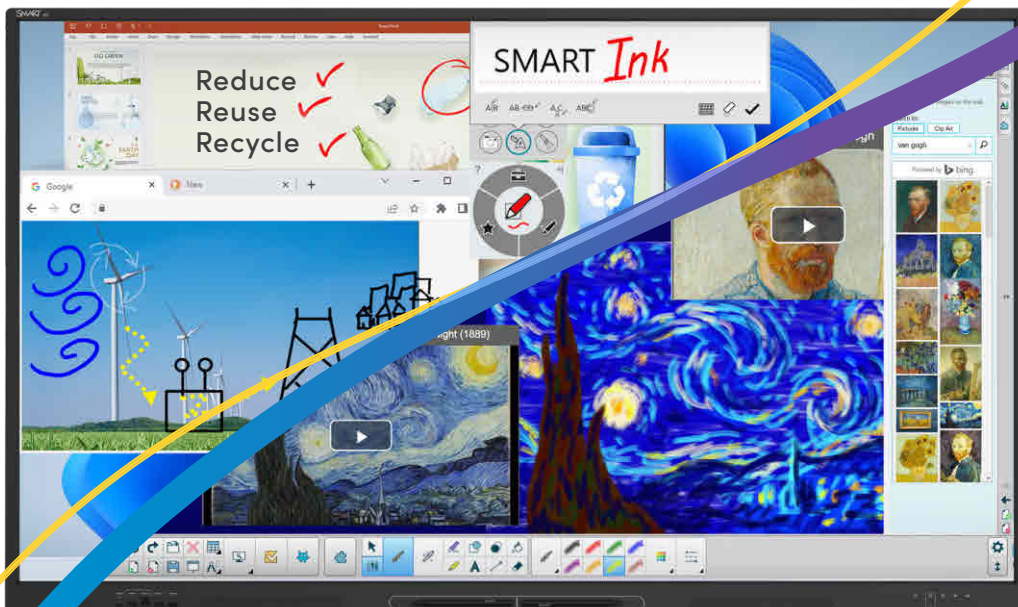
included FREE with all SMART interactive displays

NO SUBSCRIPTION!

SMART Ink

Superior digital ink that behaves how you expect—and doesn't interfere with your teaching. It really is as easy as putting pen to paper.

- No overlays- write and navigate at the same time
- Intelligent activation - just pick up a pen and write
- Write, move, resize, and use ink-to-text in any application
- Save your ink into PDF and Microsoft Office file formats.



SMART Notebook

Optimized for SMART Board interactive displays, award-winning SMART Notebook is **FREE** learning software that helps you create dynamic, interactive lessons to encourage active learning.

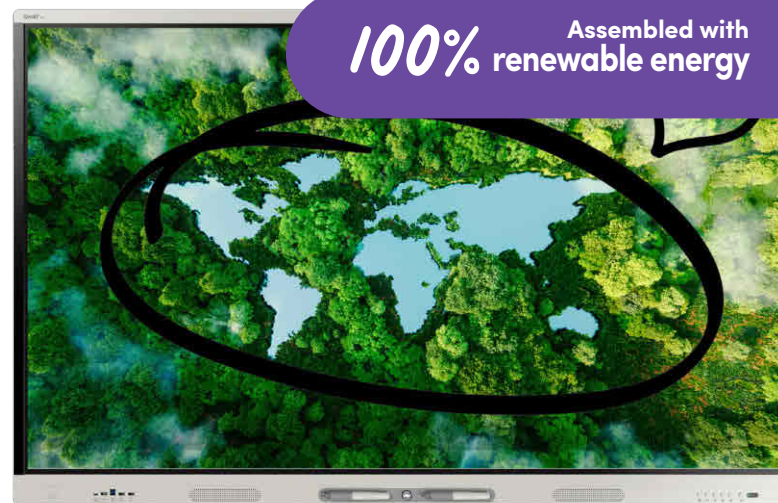
Enable hands-on learning in a digital environment no matter what you're teaching, increasing student engagement and knowledge retention.

- Tools to help focus student attention like spotlight, screen shade and Magic Pen with disappearing ink
- Simple and intuitive design for Mac and Windows.
- Plus thousands of free, ready-made lesson resources from **SMART Exchange**.

Tech that stays in your classroom

(and out of the landfill)

SMART displays are designed to last longer, save you energy and support your road to net zero. Exceptional energy efficiency and a full range of adjustable settings allow users to reduce power consumption, lowering both your operating costs and your carbon footprint.



SMART displays have a seriously long lifespan

Over-the-air updates, upgradable computing modules and fewer product replacements result in less e-waste. SMART's rigorous Accelerated Life Testing, which includes extreme temperature, humidity, and voltage testing, helps maximize product lifespan and minimize hardware replacement.



Shipping and packaging that's recyclable and fuel-efficient

Minimize the carbon footprint of your technology purchase. Enjoy peace of mind knowing your SMART display comes in recyclable packaging that has been optimized and redesigned to fit up to 30% more products into shipping containers. Now that's a shift you can feel good about.



An ethically-sourced supply chain, from top to bottom

SMART is committed to sourcing components and materials for your technology from companies that meet our high standards for human rights, ethics, and environmental responsibility. SMART diligently evaluates and audits direct suppliers on their commitment to becoming conflict-free.



The details that make a difference with energy

ENERGY STAR® certified and EcoDesign compliant



Energy-saving features:



Proximity sensors



Ambient light sensors adjust brightness for your environment



User-adjustable sleep timing and power saving settings



OPS upgradable embedded computing



Automatic OTA updates

- Android 11 & security updates
- New features & functionality

Exceptional privacy and security

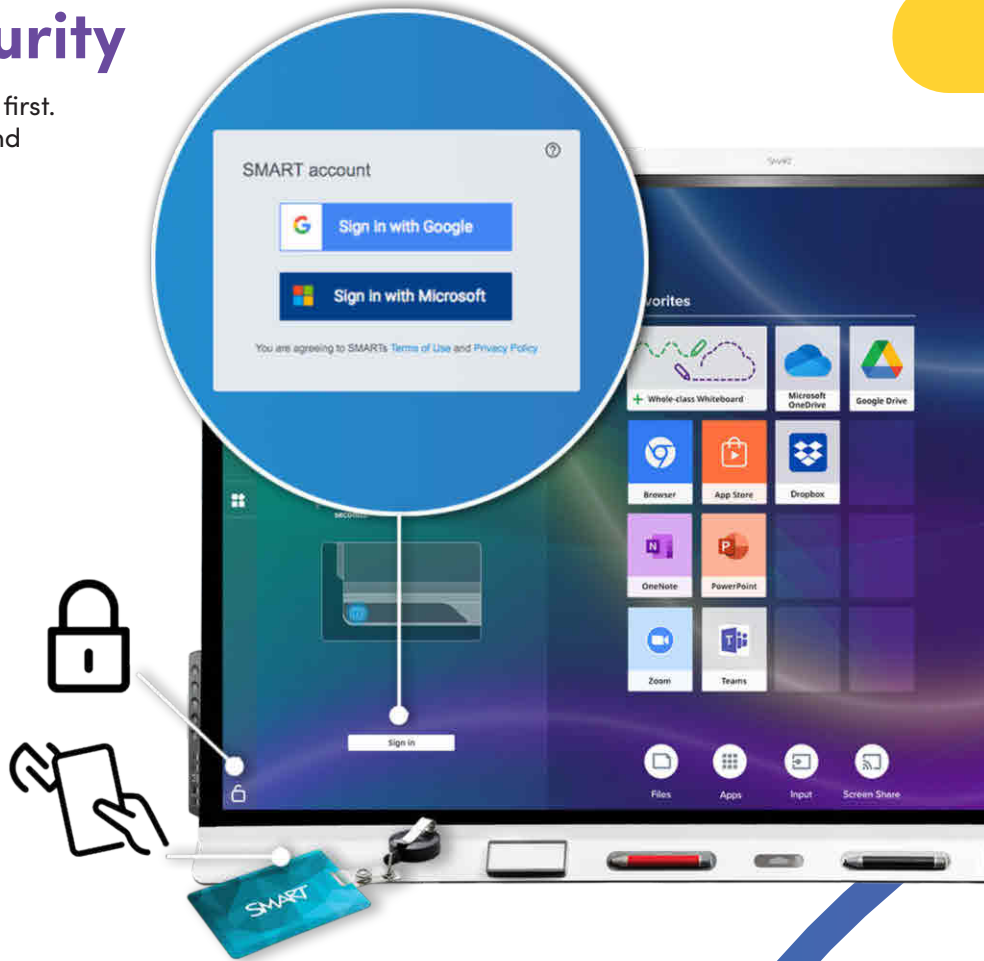
At SMART, customer data safety comes first. SMART customers enjoy safe, secure and worry-free data protection.

The SMART security approach:

SMART-developed iQ embedded computing lets us purpose-build your technology on Android 11, with the highest security standards.

Displays with iQ feature:

- Technical security walls built to mitigate security threats to standard Android devices
- Automatic OTA security patches and updates
- User profiles leverage Google & Microsoft for secure, self-serve authentication
- Support for security certificates for authenticating and accessing networks
- Feature lock-down (via SMART Remote Management)



Customer privacy comes first:

Trusted data storage and processing:

- Customer data is hosted using best-in-class Amazon Web Services and Google Cloud data centers.

GDPR compliant

- Compliant with all local and federal legislation. European customers can choose to have product user data stored and processed in the EU.

Own your data:

- Data privacy, and safe, secure and worry-free data protection policies and procedures are a top priority at SMART. For more information, visit smarttech.com/privacy.



The **all-in-one** digital learning tool

Lumio makes it easy to level up any lesson with increased interactivity, collaboration, and game-based learning to engage students on their devices, wherever they are.

Save costs and simplify your tech approach with a tool that lets teachers do it all – plan, evaluate and deliver fun, engaging lessons – in one powerful cloud-based tool.





Why educators love Lumio:

- ✓ Import and combine existing files (PDFs, Google Slides, PowerPoint, and Notebook)
- ✓ Thousands of ready-made lessons and resources
 - ↳ Game-based activities and team quizzes
 - ↳ Graphic organizers
 - ↳ Digital manipulatives
- ✓ Convert any resource into a digital handout
- ✓ Small-group and whole-class collaboration
- ✓ Teacher and student pacing
- ✓ Formative assessments and feedback tools
 - ↳ Polling and class discussions
 - ↳ Real-time class and individual student data
- ✓ STEAM tools like Desmos, Equation Editor and PhET
- ✓ Access anywhere, on any device with a web browser
- ✓ And all the tools needed to create an engaging learning experience from scratch!

Why schools and districts love Lumio:

- ✓ Make Chromebooks and iPads even more interactive
- ✓ Integrates with Google Drive, Google Classroom and Microsoft Teams
- ✓ Easy deployment with OneRoster
- ✓ Exceptional privacy and security, GDPR compliant

.....and all at a much lower price than comparable options!



Get more value from your student devices

Transform lessons into active, collaborative experiences that engage students on their devices with Lumio.

Flexible learning

Lumio lets teachers combine and edit different file types into their lessons, adjust lesson delivery on the fly with flexible pacing to adapt content to student needs.

Meaningful collaboration

Shared workspaces and flexible ways to group students make it easy for students to collaborate with each other in dynamic ways. Teachers can track student contributions to monitor progress and provide feedback in real-time.

Game Based + Active Learning

Lumio comes equipped with tons of customizable game templates, graphic organizers, and digital manipulatives, all of which students can access at home. It's easy to make learning fun with Lumio.

Aligned to Best Practices

Lumio gives teachers the tools they need to implement active learning, student wellbeing, and a student-centered, personalized learning approach.





Give your teachers the gift of Lumio



Your educators can get started for FREE: golumio.com/login

Google for Education
Partner

SMART Camera UHD 120 Webcam

The SMART Ultra HD Camera 120 provides a rich, immersive visual experience designed for the needs of the modern classroom. The SMART Ultra HD Camera 120 mounts flush to the top of the interactive display bezel for effortless remote and hybrid learning.



- **Ultra HD 4K resolution with auto-framing**
- **Compatible with all mic-array enabled SMART interactive displays**
- **Remote control included**

SMART Board Computing modules

SMART Board Computing modules bring the power of **Windows 11 Pro** to your interactive displays. Access Microsoft Office® files and all your applications for true walk up and use simplicity.

- **Windows Autopilot enabled - Easily set up new devices, save time and deliver a standardized user experience.**
- **Integrated Wi-Fi hotspot - Easily and securely connect up to 8 devices with the OPS PC module's mobile hotspot.**

SMART Podium 624

Connect to your projectors, displays and computers to add interactivity everywhere. Markup static content when presenting, write and save notes, and use presentation tools to guide students through key concepts and improve comprehension. Easy to use, deploy and support, the SMART Podium helps your instructors communicate ideas more effectively.

- **24" HD touch screen with cordless, battery - free pen and adjustable stand**
- **Plug & Play support for Windows Ink**
- **Works with your conferencing solutions**
- **Includes SMART Ink for Windows and Mac OS**





SMART

Document Camera 650

Connected and captivating

The SMART Document Camera 650 connects digital learning to the physical world in high definition, to help increase student engagement even while video conferencing. It provides a simple way to capture, share and connect students to facts, figures, and concepts. View, capture and write over content within iQ on SMART displays or directly into your SMART Notebook lesson. Easy to set up, use and maintain in flexible and diverse classroom configurations, the SMART Document Camera is a solid investment for every EdTech budget.

- **4K Ultra HD, 13 MP camera**
- **Seamless integration with iQ whiteboard**
- **10X optical zoom, 230X total zoom**
- **Built-in microphone**
- **Wired or dual-brand Wi-Fi**
- **Peer-to-peer wireless connectivity**
- **HD video conferencing (UVC compliant)**
- **5-year warranty**

A remote control makes the capture, recording and broadcast of lessons simple



Professional Learning



Simplify implementation for you and your teachers

Intuitive, easy to use hardware and software, with a range of professional learning options to help educators integrate technology effectively, and more often, maximizing your tech investment.

Everything you need to get started:



go.smarttech.com/learnlumio

go.smarttech.com/learnsmart



Free, unlimited professional learning:

Move beyond features and function to empower educators to utilize technology to its maximum potential.

Learn more at: go.smarttech.com/professional-learning



Onboarding Support

- Installation and deployment
- Guided onboarding
- Ongoing newsletters
- Unlimited live and on-demand webinars



On-demand Resources

- Getting started and quick train videos
- Pedagogical toolkits
- Training resources for schools and districts



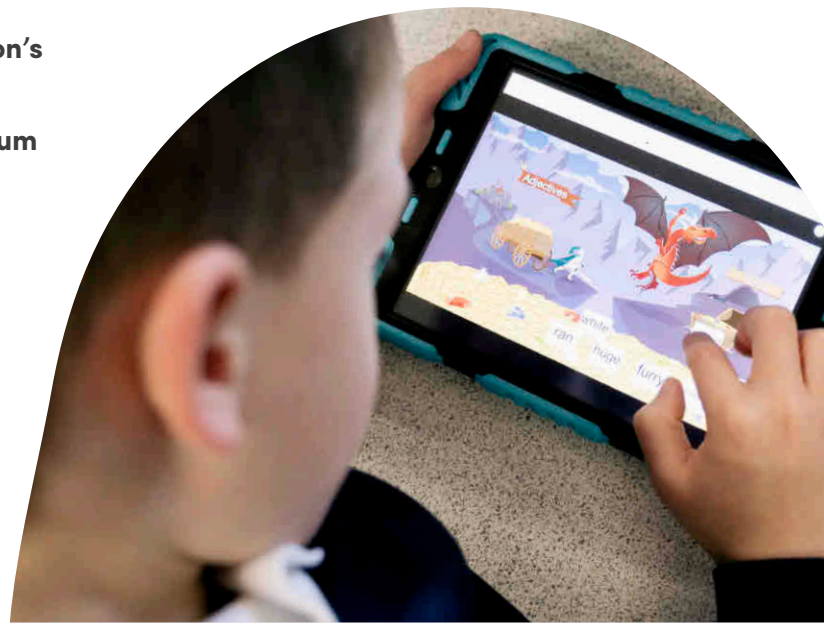
Global Communities

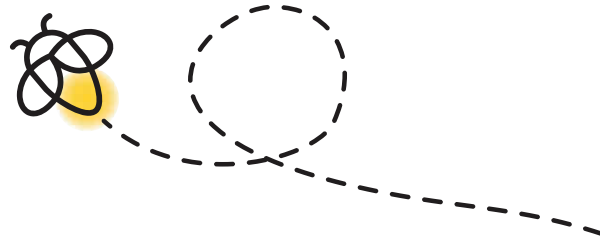
- Ambassadors
- Certification learning cohort
- Certified trainers
- Social media communities

Expert-led professional development

Maximize the impact of your hardware and software investment with hands-on professional development led by our team of educators. Choose from live remote, half-, or full-day sessions that are customized to meet your educational goals.

- Content tailored to meet your organization's technology and learning goals
- Sessions aligned to your existing curriculum and learning materials
- A robust training resource package for participants to share with colleagues





Ready to find out how SMART solutions
can support your classrooms?

